



Integrated Training Area Management
**STEWARDSHIP
 REPORT 2020**

CONTENTS

This Report

The Stewardship Report on the U.S. Army Europe and Africa (USAREUR-AF) Integrated Training Area Management program is published annually and reports performance and accomplishments for all program components.

The report covers the period from January 1 to December 31, 2020.

For further information and an electronic version of this and our previous reports, visit our website or Facebook page:

<https://srp.usareur.army.mil>

www.7atc.army.mil/TSAE

<http://www.facebook.com/usareur.srp>

Email:
usarmy.bavaria.7atc.list.usareur-srp@mail.mil

LETTER FROM THE COMMANDER	1
WHO WE ARE	2
ITAM MISSION	4
7th ATC AREAS OF RESPONSIBILITY	5
PROTECTING BIODIVERSITY: TRAINING AREAS AS "ISLANDS OF BIODIVERSITY"	6
TRAINING REQUIREMENTS INTEGRATION IN PRACTICE	8
RANGE AND TRAINING LAND ASSESSMENT	10
RTLA IN PRACTICE	11
LAND REHABILITATION AND MAINTENANCE PROJECT CATALOG	12
GEOGRAPHIC INFORMATION SYSTEMS	16
SUSTAINABLE RANGE AWARENESS	18
WHO NEEDS WHAT	20
TAP IN	22
BY THE NUMBERS	24
ITAM SUPPORTED EXERCISES	26
SUMMER EXERCISE SERIES 2020	27
BERGHEIM CHURCH IN HOHENFELS	28
FOREST STEWARDSHIP	30
ENVIRONMENTAL MANAGEMENT	31
2021 INITIATIVES	32

OUR MISSION



Mission Statement: 7th Army Training Command provides lethal formations (U.S. and Allies) to a Land Component Commander to fight a near-peer adversary, as directed in both the National Defense and Army Strategies.



Commander's Intent: Prepare U.S., Allies and select Partners to fight and win against a numerically superior, near-peer adversary in a complex and degraded operational environment throughout the contact and blunt layers as outlined in the 2018 National Defense Strategy and the 2028 Army Strategy.

THE CROWN JEWELS OF U.S. ARMY EUROPE

233 km²

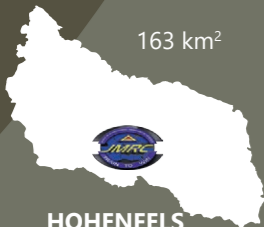


GRAFENWÖHR TRAINING AREA

The **Grafenwöhr Training Area (GTA)** is the U.S. Army's largest and most sophisticated permanent training area in Europe.

The 7th ATC's GTA provides the highest quality ranges, maneuver areas, other training facilities, training assistance and support to U.S., Joint and Multinational commands, enabling them to safely achieve and sustain live-fire qualification gunnery standards and to hone their skills to win in any operating environment.

163 km²



HOHENFELS TRAINING AREA

Hohenfels Training Area (HTA) is the largest USAREUR-AF maneuver training area and headquarters to the Joint Multinational Readiness Center (JMRC).

JMRC is the only Army Combat Training Center outside the continental U.S. HTA is 163 km², has 1,345 buildings for training, 319 kilometers of road, numerous cross-country trails, and one short take-off/landing airfield.

7TH ARMY TRAINING COMMAND (7TH ATC)

7th Army Training Command

The 7th Army Training Command (7th ATC) resources the training readiness for all of USAREUR-AF's assigned and allocated forces throughout the United States European Command (EUCOM) area of operations with the following 7th ATC Directorates.



Joint Multinational Readiness Center



Joint Multinational Simulation Center



7th Army NCO Academy



Training Support Activity Europe



Combined Arms Training Center



International Special Training Center



Grafenwöhr Training Area

7th ATC, headquartered at Tower Barracks in Grafenwöhr Germany, exercises Training and Readiness Authority (TRA) over four brigades.



2nd Cavalry Regiment (2nd CR)



12th Combat Aviation Brigade (12th CAB)



173rd Airborne Brigade (173rd AB)



41st Field Artillery Brigade (41st FAB)

Training in a COVID-19 environment

We must protect the force so the Army can protect the nation, at home and abroad. By staying healthy, we are ready to deploy and fight in a contingency, if necessary. Following COVID mitigation plans, the Army is ready to respond globally, postured to execute our wartime mission and sustain combat operation.



Summer Exercise 2020

For more information about 2020 summer exercises see page 26.

LETTER FROM THE COMMANDER



I am pleased to present the USAREUR-AF, 7th ATC, Integrated Training Area Management (ITAM) annual Stewardship Report for 2020.

This report provides an overview of our efforts to balance sound land management with our unchanged mission over the past seven decades, to secure peace by providing well-trained units ready and integrated alongside our Allies and Partners. What I hope you take away, after reading this report, is our steadfast commitment to responsible environmental stewardship and protection.

The 7th ATC, headquartered in Grafenwöhr, Germany, is a large and diverse organization that touches almost every Army training event in Europe.

The 233 km² Grafenwöhr Training Area is the largest and most advanced live-fire training facility in Europe. The neighboring 163 km² of the JMRC, HTA, provides realistic and challenging combat training for individual through brigade level. At both these training areas, units from across the Army and other U.S. services, as well as NATO Allies and Partners, build their capabilities to work together as a combined, joint force. This dynamic relationship ensures we can prevail against adversaries today while laying the foundation to prevent and deter future conflicts.

The ITAM program is responsible for providing sustainable and balanced stewardship of USAREUR-AF's training land. This stewardship is possible through the substantial investment the U.S. Army has made into the training land sustainment and the strong support 7th ATC receives from the many stakeholders involved in training area management, from host nation forestry services to rotational units.

It is important to maintain responsible stewardship of the host nation land in which we train. Respecting our relationship with the land and our host nation is what makes effective training and resource preservation possible. Our aim is to continue to improve and that requires a candid assessment of our achievements and challenges. We are always pleased to receive any feedback; the ITAM contact details can be found on the contents page.

Thank you for helping us meet our mission responsibly!

Train to win!

Christopher R. Norrie
Brigadier General, U.S. Army
Commanding

WHO WE ARE



U.S. Army Europe and Africa

USAREUR-AF Mission

U.S. Army Europe and Africa's mission is to provide ready, combat-credible land forces to U.S. European Command and U.S. Africa Command. The headquarters provides command and control of U.S. land forces across two continents. On Nov. 10, 2020, the U.S. Army announced the consolidation of U.S. Army Europe and U.S. Army Africa into one Army Service Component Command.

Headquartered in Wiesbaden, Germany, USAREUR-AF's forces are strategically positioned across our 104-country area of responsibility to deter aggression and reassure our Allies and Partners of the U.S. commitment to regional peace and stability.

[facebook.com/USArmyEURAF/](https://www.facebook.com/USArmyEURAF/)



7th Army Training Command

7th ATC Mission

The 7th ATC is the U.S. Army's largest overseas training command, setting the training environment and resourcing live and virtual training for all U.S. Army forces stationed and deployed in Europe, as well as select U.S. European Command, allied and partner units. 7th ATC provides and projects ready, combat credible forces to U.S. Army Europe and U.S. European Command while testing and strengthening interoperability with Allies and Partners to support theater operations and drive readiness within NATO.

- » Readiness is our #1 priority. We deliver ready, trained, and equipped forces for operational demands.
- » 7th ATC provides resource training readiness for all of USAREUR-AF's assigned and allocated forces throughout the EUCOM area of operations.
- » We lead the Army in developing Allied and partnered nation interoperability, providing the Army with an active learning, near peer environment to press modernization initiatives.
- » We operate a unique Combat Training Center (CTC) that focuses on interoperability and training Brigade Combat Teams to fight and win when called upon.

[facebook.com/7thATC/](https://www.facebook.com/7thATC/)



Training Support Activity Europe

TSAE Mission

The Training Support Activity Europe provides home-station, expeditionary, rotational, and contingency training support across the USAREUR-AF's Command Areas of Responsibility in order to build readiness and increase interoperability of all U.S. assigned, attached, regionally aligned forces, our multinational partners, and allies. On behalf of 7th ATC and U.S. Army, TSAE manages the Training Support System management process and the theater Visual Information program.

[facebook.com/TrainingSupportActivityEurope/](https://www.facebook.com/TrainingSupportActivityEurope/)



Sustainable Range Program

SRP Mission

The Sustainable Range Program (SRP) is the Army's overall approach for improving the way in which it designs, manages, and uses its ranges to ensure long-term sustainability.

[facebook.com/USAREUR.SRP/](https://www.facebook.com/USAREUR.SRP/)



We stand shoulder-to-shoulder with the Joint Force, Allies, and Partners to protect our interests and uphold our shared values.

James McConville, General, Chief of Staff of the Army



Integrated Training Area Management

ITAM Mission

ITAM is a management and decision-making process that integrates training and other mission requirements for land use with sound natural resource management practices.

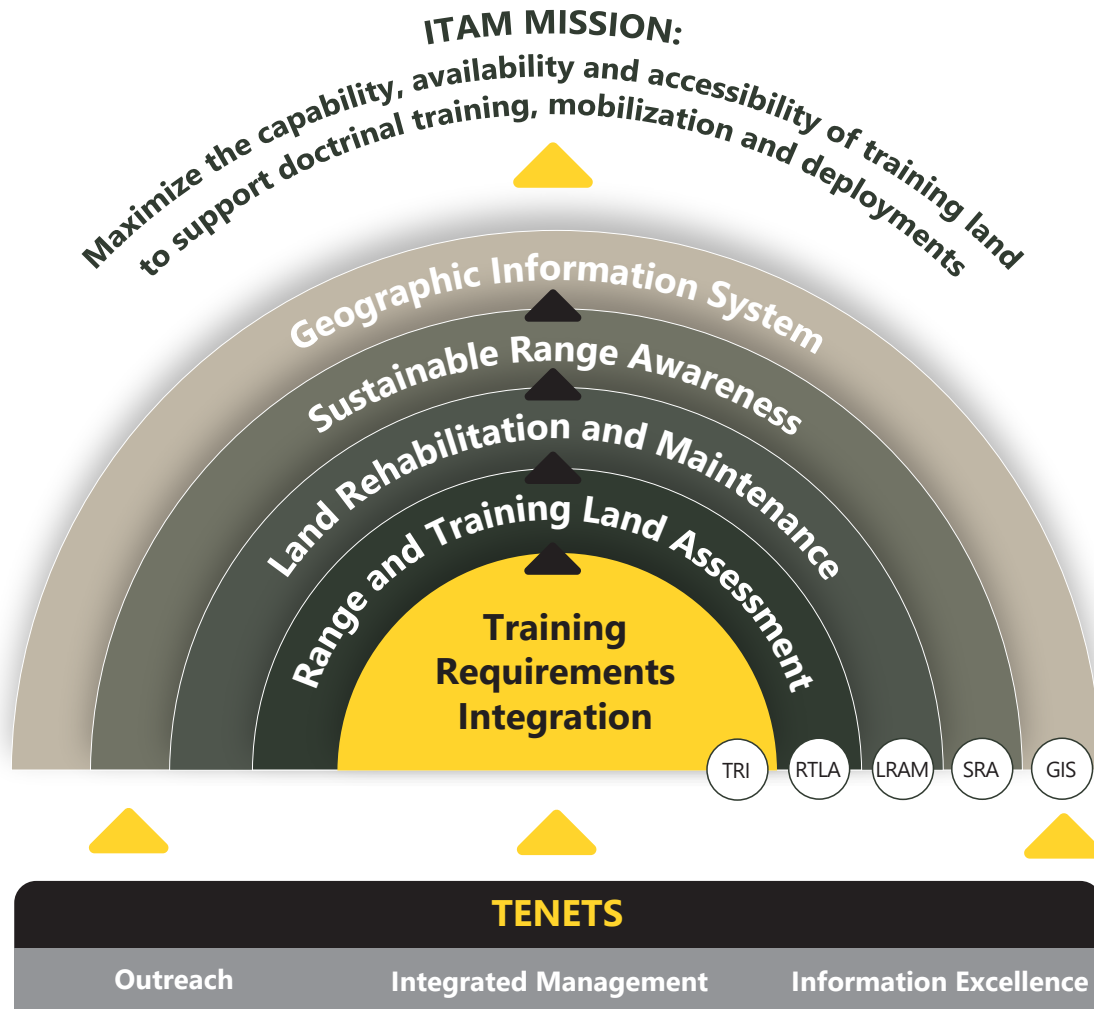
ITAM is a core program within the Army's SRP under the direction of the Chief, Training Support Systems Division, Office of the Deputy Chief of Staff, G-3/5/7.

ITAM:






- » Develops methods to maintain natural environments that are resilient and resistant to military use
- » Provides capabilities to establish training land conditions and monitors training lands (Range and Training Land Assessment)
- » Provides an awareness program for land users (Sustainable Range Awareness)
- » Provides means to apply training loads to land capabilities, resulting in land management that ensures that training does not stop due to non-compliance with environmental laws (Training Requirement Integration and Geographic Information System)
- » Sustains the Army's live training capability (Land Rehabilitation and Maintenance)



ITAM MISSION



Lines of Effort

- 
TRI Provide a training support procedure that integrates training requirements with management
- 
RTLA Characterize and monitor an installation's natural resources, geospatially and temporally
- 
LRAM Implement preventive and corrective land repair projects that ensure availability, accessibility and capability of training lands
- 
SRA Promote visibility of environmentally sensitive issues and instill a stewardship ethic among unit commanders, ground troops and neighboring communities
- 
GIS Provide accurate, complete and standardized spatial data. GIS data and products adhere to Federal, DoD and Army spatial data standards

USAREUR-AF ITAM is proud to support:



PROTECTING BIODIVERSITY: TRAINING AREAS AS “ISLANDS OF BIODIVERSITY”

The extensive and diverse terrain created from military training activities offers a unique opportunity for nature to recover without disturbance from farming, tourism, and human developments. Due to the military's hard work to protect the environment, large training areas such as Grafenwöhr and Hohenfels have become important Natura 2000 sites in Bavaria. These training areas and others throughout Europe accommodate many species which have largely disappeared from the surrounding cultural landscape. Military Training Areas provide the habitats for important and protected Fauna-Flora-Habitats (FFH), Special Areas of Conservation (SAC) and EU bird sanctuary Special Protected Areas (SPA).

Eurasian otter (*Lutra lutra*)

Eurasian otters were almost extinct by the end of the 1950s due to hunting for their fur. Although numbers have been increasing since they became a protected species, threats from traffic and pesticides have hindered their recovery. The GTA located on the Natura 2000 Naab river system which contains ideal waters for these semiaquatic mammals, resulting in sightings in the Vilseck community.

“Biodiversity benefits from the diverse landscapes created by military training.”

The NATO Channel, Training among endangered species, 2012

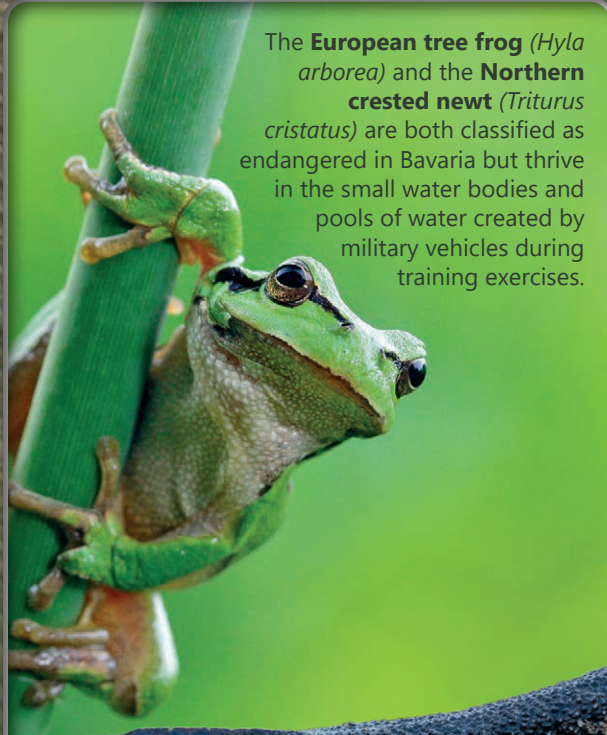


European wildcat or forest cat (*Felis silvestris silvestris*)

Classified as endangered in Bavaria, recent wildcat sightings on U.S. military training areas are a positive sign of recovery. They thrive in large wooded areas with deadwood and rock crevices for protection, which is why military landscapes are favored over monoculture tree plantations.



The **common wood warbler** (*Phylloscopus sibilatrix*) and **grey-headed woodpecker** (*Picus canus*) are important Red List species in Bavaria and are commonly found in the birch forests of the training areas.



The **European tree frog** (*Hyla arborea*) and the **Northern crested newt** (*Triturus cristatus*) are both classified as endangered in Bavaria but thrive in the small water bodies and pools of water created by military vehicles during training exercises.



Western osprey (*Pandion haliaetus*)

This impressive bird of prey typically requires fish-rich, slow-flowing waters with neighboring trees for breeding. After many years of fragmented population in Europe due to hunting and pesticides, breeding was recorded on the GTA in 1992. Although numbers are growing, the osprey is still considered critically endangered in Bavaria.

TRAINING REQUIREMENTS INTEGRATION (TRI) IN PRACTICE

The Training Requirements Integration (TRI)

component of ITAM provides a decision support capability based on the integration of training requirements, land conditions, range facilities, and environmental regulations. TRI involves collaboration between military units, range officers, organization personnel, trainers, environmental technical staff, natural and cultural resources managers, as well as local communities:

- » Facilitate decision-making concerning land use planning and management that meets training requirements, regulatory compliance and conservation measures.
- » Analyze training impacts to support effective land management procedures.
- » Develop land use strategies that consider the impacts of military operations on natural resources and environmentally sensitive lands.

Military training areas across USAREUR-AF provide innovative and multinational training opportunities to train in a realistic arena, while at the same time supporting high biodiversity of threatened and endangered species. By bringing together military and environmental stakeholders, TRI ensures the military training mission can be conducted while providing sound environmental and natural resource stewardship.

See pages 6, 7, 30 and 31 for more information on the outstanding biodiversity of training lands and coordination with environmental stakeholders.



HTA Maneuver Corridor Concept

Maneuver Corridors are the routes allowing training units to move along avenues of approach during a training exercise. ITAM in conjunction with JMRC, U.S. Army Garrison Bavaria, German Federal Forestry and Host Nation environmental agencies identified and prioritized the corridors for extensive vegetation removal to improve accessibility for military requirements. The removal of the vegetation, in accordance with (IAW) Training Circular TC 25-1, allows military vehicles to utilize the forest edge areas to increase maneuverability for advanced tactical operations. This cooperative approach demonstrates the importance of TRI in managing complex ecosystems to meet sound environmental and military land use requirements.



Before vegetation removal

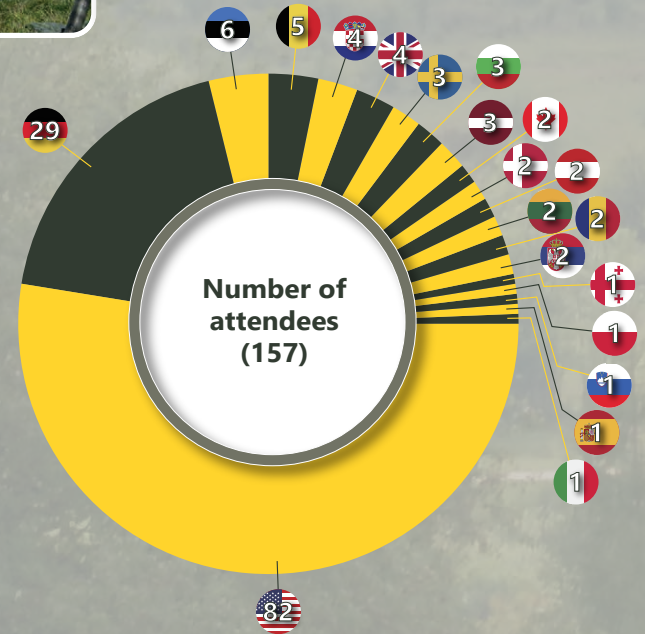


USAREUR-AF Sustainable Range Program (SRP) Workshop

The USAREUR-AF SRP Workshop provided a forum to reinforce USAREUR-AF's Integrated Training Area Management (ITAM) and Range and Training Land Program (RTLTP) policies and procedures for range and training land best practices. The important benefits of the annual SRP Workshop are the training forums, ideas, lessons learned, and experiences shared between the diverse program participants.

Due to travel and meeting restrictions associated with COVID-19, SRP moved the workshop to a virtual platform using Microsoft Teams software. This platform enabled a wide breadth of participation from U.S. government and international attendees. The workshop included 24 briefings / training sessions. The event was attended by 157 individuals.

157
international attendees
via Microsoft Teams



Top SRP Support 2020 - Dieter Freitag

For years, Dieter Freitag (Geo Archiv Nordost-Bayern) has been supporting the Grafenwöhr military training area with various services, including geological mapping and investigating the influence of Karst environments on training operations. Dieter's research studies have explored the Middle / Upper Jurassic boundary layers and sedimentary iron ore deposits found within GTA.

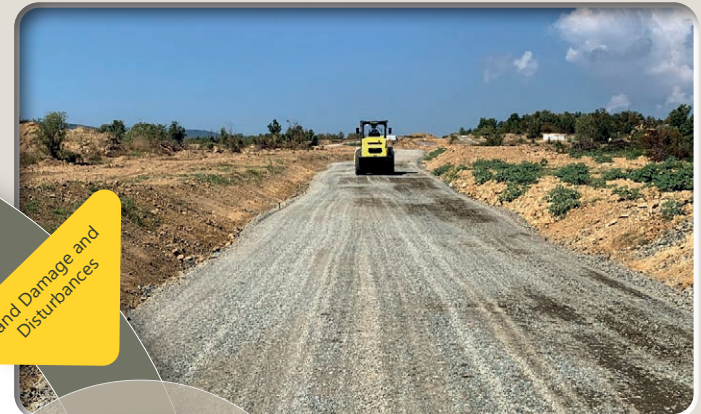


RANGE AND TRAINING LAND ASSESSMENT (RTLA)

Italian Training Areas - Five-Year Sustainment Plan

The ITAM program analyzed Monte Romano Military Training Area (MTA), Monte Carpegna MTA, Maniago Local Training Area (LTA), Rivoli Bianchi Venzone LTA and Cao Malnisio Range, to identify sound solutions for training area resilience. This project utilized remote sensing data and on-the-ground field surveys to identify areas where mitigation measures are required.

The results of this project will prioritize a five-year work plan, focusing on sustainable land management practices.



Novo Selo Training Area - Five-Year Sustainment Plan

The ITAM program is creating a Five-Year Range Sustainment Plan in Novo Selo Training Area, Bulgaria. This plan will utilize vegetation analysis, soil erosion, and watershed modeling data to develop a prioritized list of projects that ensures the training area remains sustainable. Furthermore, a detailed fire analysis will help to identify areas of risk of fire and prescribe effective mitigation measures.

RTLA IN PRACTICE



Stormwater control structure



HTA HEC-RAS Modeling

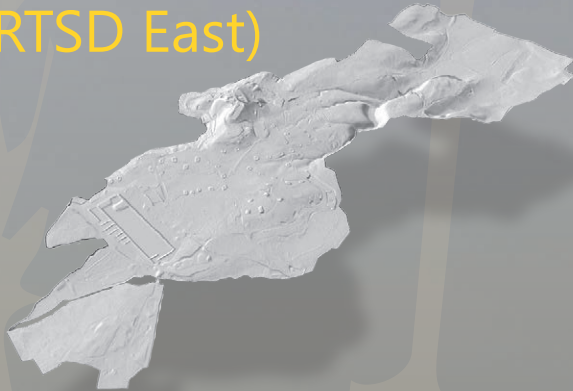
The ITAM program has funded a research project to analyze the capacity of the current erosion control infrastructure within HTA.

This task is focused on flooding and watershed stability assessments using the U.S. Army Corps of Engineers, Hydrologic Engineering Center's River Analysis System (HEC-RAS). The project will model flood and watershed conditions to identify which stormwater control structures are operating as designed. The results of this model will depict an accurate understanding of the complete stormwater system within HTA and provide recommendations on improving the system.

The end result will determine and prioritize future LRAM erosion control projects to prevent future erosion concerns within HTA.

LAND REHABILITATION AND MAINTENANCE (LRAM) PROJECT CATALOG

Oberdachstetten Local Training Area (OBLTA) (RTSD East)



Encroaching Vegetation Management

The annual vegetation maintenance contract is an effective tool in retaining open maneuver land training at OBLTA. The contract is in place to control unwanted encroaching vegetation. Species such as wild thistle hinder the military training for dismounted and mounted missions in OBLTA.



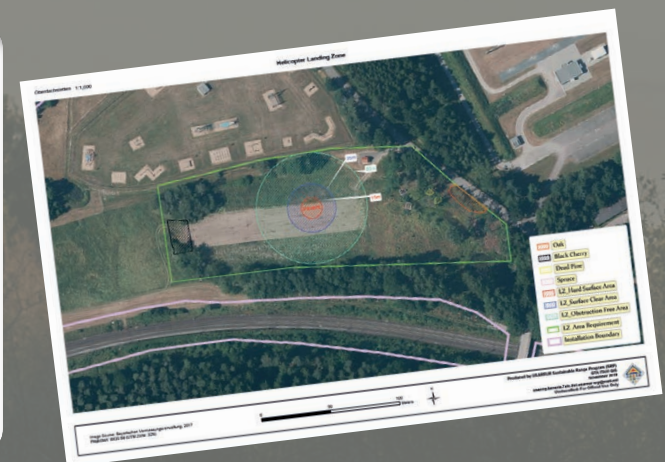
Maneuver Trail Repair

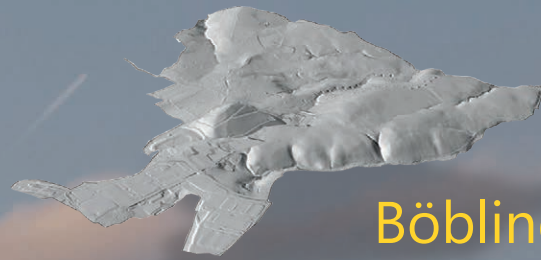
Maneuver trails are heavily used during training events at OBLTA. Maneuver trails often need continuous repair due to erosion and training damage. ITAM has supplied OBLTA with bulk material items to restore maneuver trails to good standing conditions.



Erosion Control Parking Pad

The Erosion Control Pad is a hardened green paver pad installed in a low-lying area not normally utilized by troops. The hardened pad will allow troops to be transported to and from OBLTA with CH47 helicopters. The hardened pad will ensure access to the area for training without damaging ground cover.

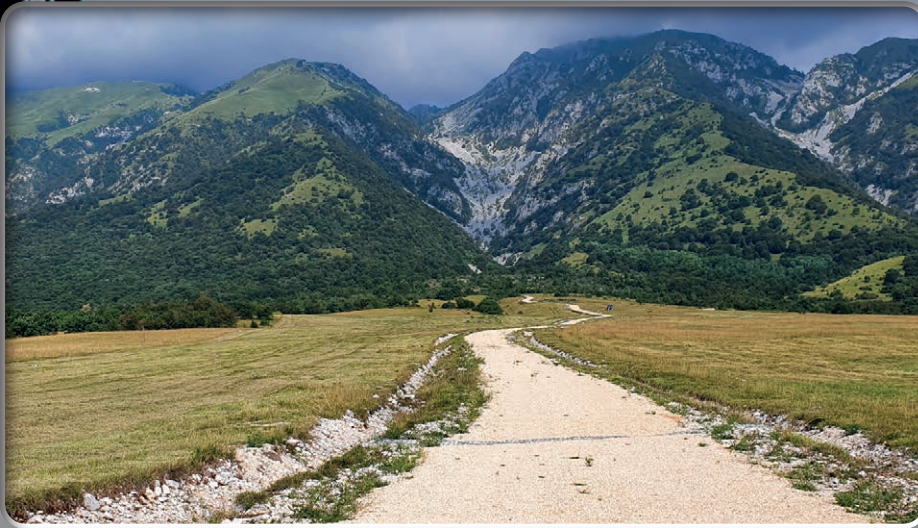




Böblingen Training Area (RTSD West)

Trail repairs and improvement of stormwater control systems are critical to the enduring sustainability of this LTA.

These projects ensure the long-lasting sustainability of the LTA to meet current and future requirements in support of local Army units in the Stuttgart area.



Before



After

Vegetation maintenance is critical for the long-lasting sustainability of the Cao Malnisio and Dandolo LTA. Open training lands are critical in providing support to the 173rd Airborne military training operations.

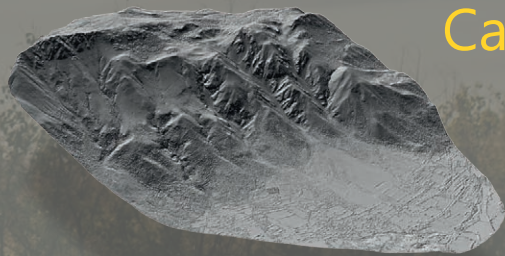


Before



After

Cao Malnisio and Dandolo Local Training Areas (RTSD South)



LAND REHABILITATION AND MAINTENANCE (LRAM) PROJECT CATALOG



Grafenwöhr
Training Area



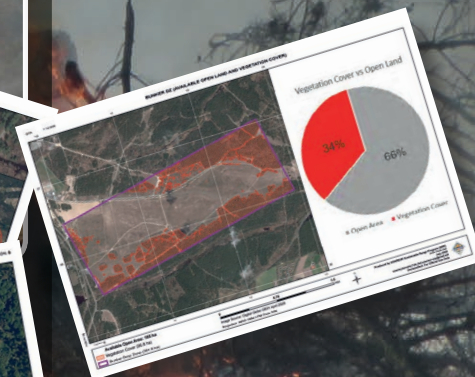
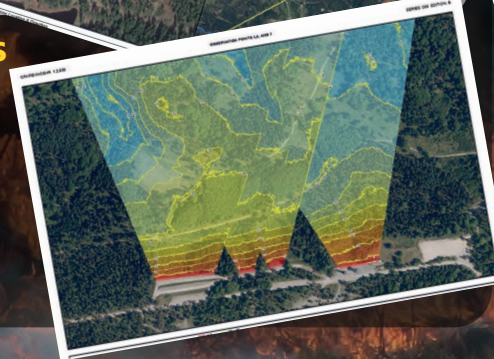
Training Land Sustainment

ITAM has established a long-lasting Memorandum of Agreement (MoA) with U.S. Army Garrison (USAG) Bavaria Directorate of Public Works (DPW) for training area maintenance. This MoA ensures sustainability of the training area for LRAM and Natura 2000 requirements. ITAM supports the program by developing restoration/maintenance plans and supplying DPW with required equipment and materials necessary to repair training area damage.



Indirect Firing Positions

ITAM has reevaluated Position Areas, Mortar Firing Points, Radar Sites and available open areas to meet the emerging indirect fire requirements to support 41st FAB. ITAM conducted a GIS analysis to identify locations where heavily forested areas could be utilized after minor vegetation removal.



Bunker Drop Zone (DZ)

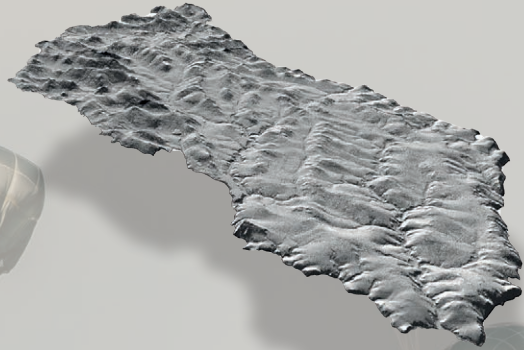
ITAM and German Federal Forestry have developed solutions to mitigate personal injury and equipment damage caused during airborne operations on Bunker DZ. As a solution ITAM and the German Federal Forestry conducted vegetation thinning and tree clearing operations IAW Bavarian forest law to reduce risk on Bunker DZ.

Wildland Fire Management

Wildland Fire Management is critical to range operations within GTA. The ITAM program has worked with GTA stakeholders to identified equipment, infrastructure and firefighting procedures to improve GTA's ability to fight wildland fire incidences. 7th ATC and TSAE procured essential aerial fire fighting equipment to support the Department of Emergency Services (DES) during high fire danger risk situations. ITAM coordinated a real world aerial firefighting suppressive training for 12th CAB aviation to improve on fire suppression tactics utilizing recently purchased Bambi Buckets.



Hohenfels Training Area



Revier 7 Hohenburg Trails

ITAM, together with the German Federal Forestry and ED, identified and repaired trail damaged from the Combined Resolve Rotational exercise. The improvements increase accessibility of the forest edge and provide new avenues of approach to the valley floor. Improvements to low-water crossings and water turnouts provide a natural course for water runoff, decreasing the likelihood of erosion.



Hohenfels Alpha Bowl Improvement

Hohenfels Alpha Bowl includes Maneuver Corridors and Drop Zones that are important training assets for JMRC. ITAM, together with the Training Area and the Drop Zone Working Groups, identified encroaching vegetation, rocks and cultural sites that were impeding training exercises. ITAM worked with the German Federal Forestry, local Natura Council and Environmental Division (ED) to address these concerns and find a way forward to improve the training corridors while still meeting German environmental concerns.



Short Take-Off and Landing (STOL) Parking Apron

STOL Strip is an important training asset for JMRC. It is the only dirt landing strip than can be utilized for U.S. Air Force C-130 aircraft to practice take-off and landings. The parking apron will provide the ability to have two aircraft on the ground while allowing a third to land. ITAM, JMRC S3 Air Ops, ED, and German Federal Forestry worked together to reduce the amount of forest clear-cuts and prevent cultural site impacts. ITAM is working with JMRC to ensure this project receives support through the environmental compliance and Auftragsbauten Grundsätze (ABG) / Principles of Construction Contracting process.



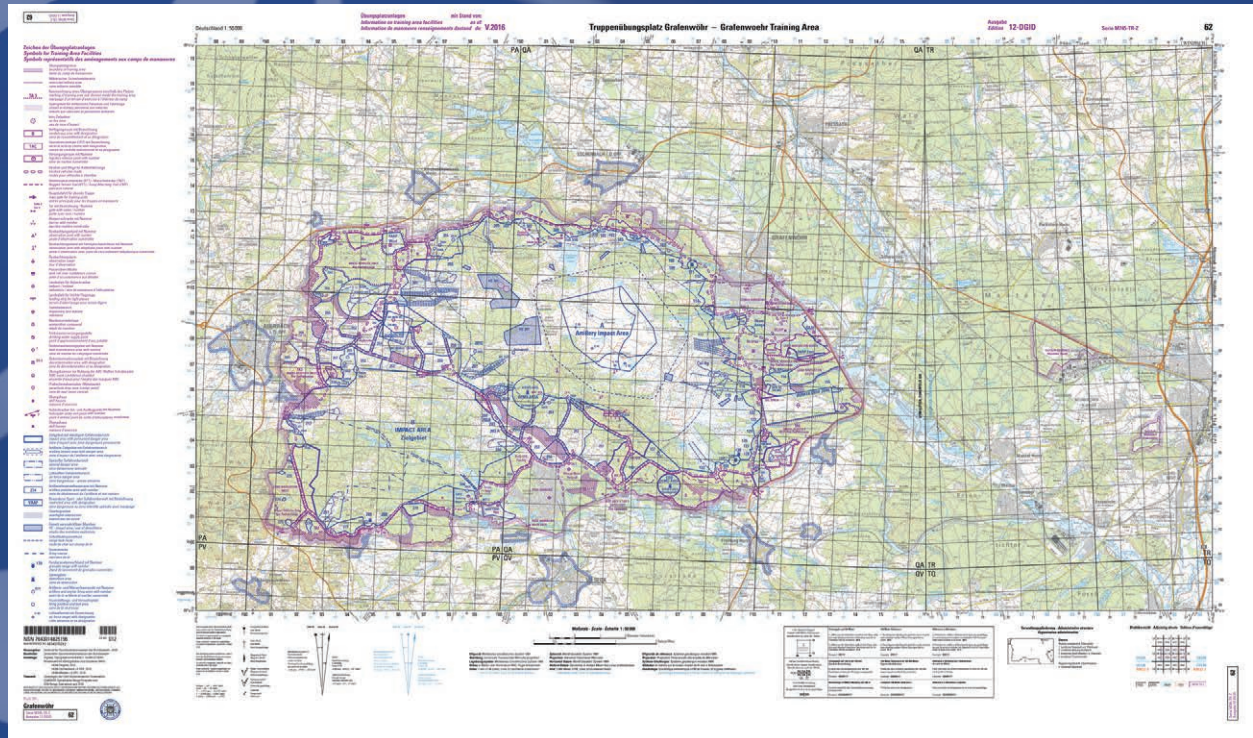
GEOGRAPHIC INFORMATION SYSTEMS (GIS)

NATO STANAG 3833 Map Standardization Agreement

ITAM is working in cooperation with multiple NATO partner nations throughout the USAREUR-AF footprint to create training area maps that meet the NATO Standardized Agreement (STANAG) 3833.

ITAM's support enables Host Nations to develop high-fidelity maps that accurately depict training area facilities along with safety and environmental requirements. Utilizing NATO standards allows Host Nations, Allies and Partners to operate off the same map and enhance interoperability across NATO.

In parallel to this work, ITAM is an active player in updating NATO standards through the Joint Geospatial Standards Working Group. ITAM is uniquely positioned as a leader for geospatial standards reflecting military training and readiness.



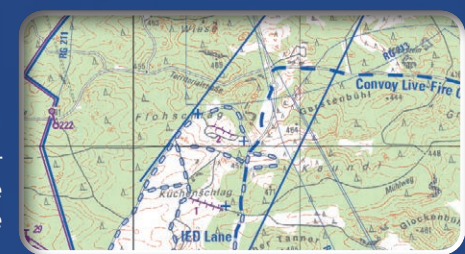
Environmental protection zone along a wetland



Major supply routes and tank trails



Approved safety zone markings in the impact area



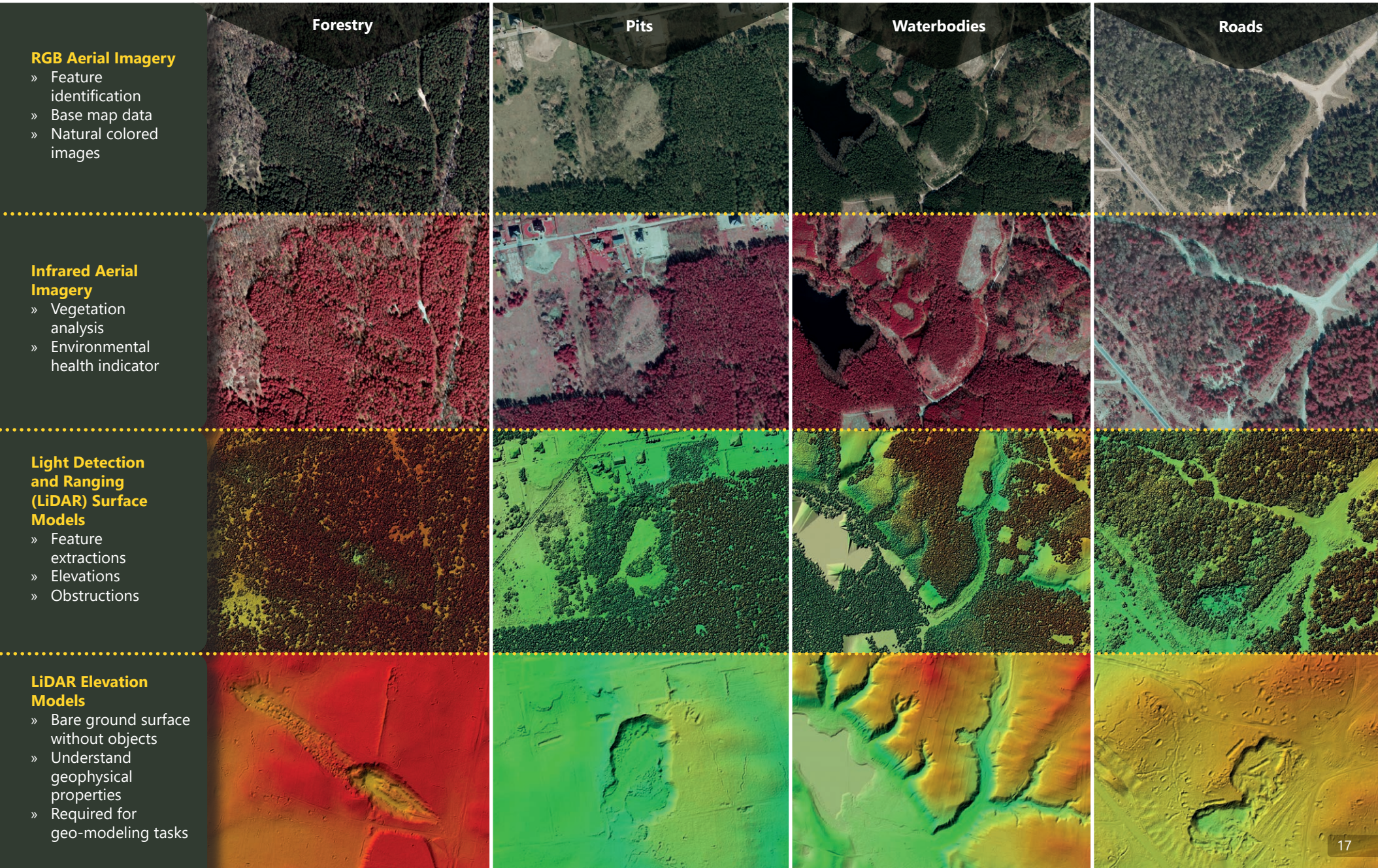
Maneuver live-fire range

Remote Sensing

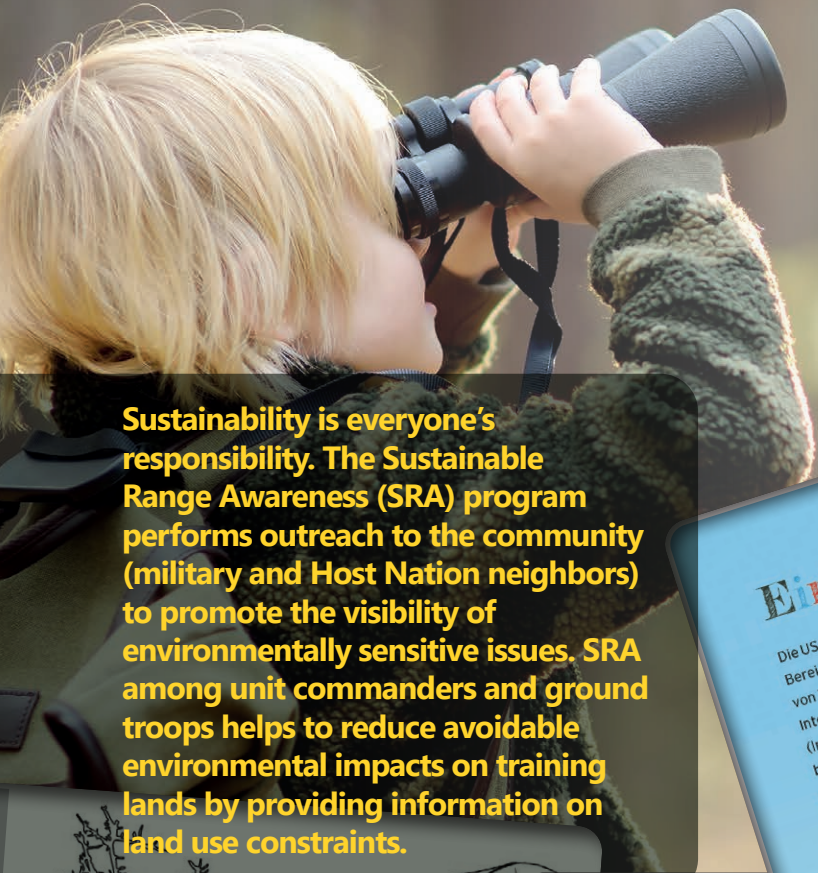
The ITAM program implements remote sensing applications to holistically understand the complexities of managing military requirements, while meeting environmental protection.

“Remote sensing is the science and technology of capturing, processing and analyzing imagery, in conjunction with other physical data of the Earth and the planets, from sensors in space, in the air and on the ground.”

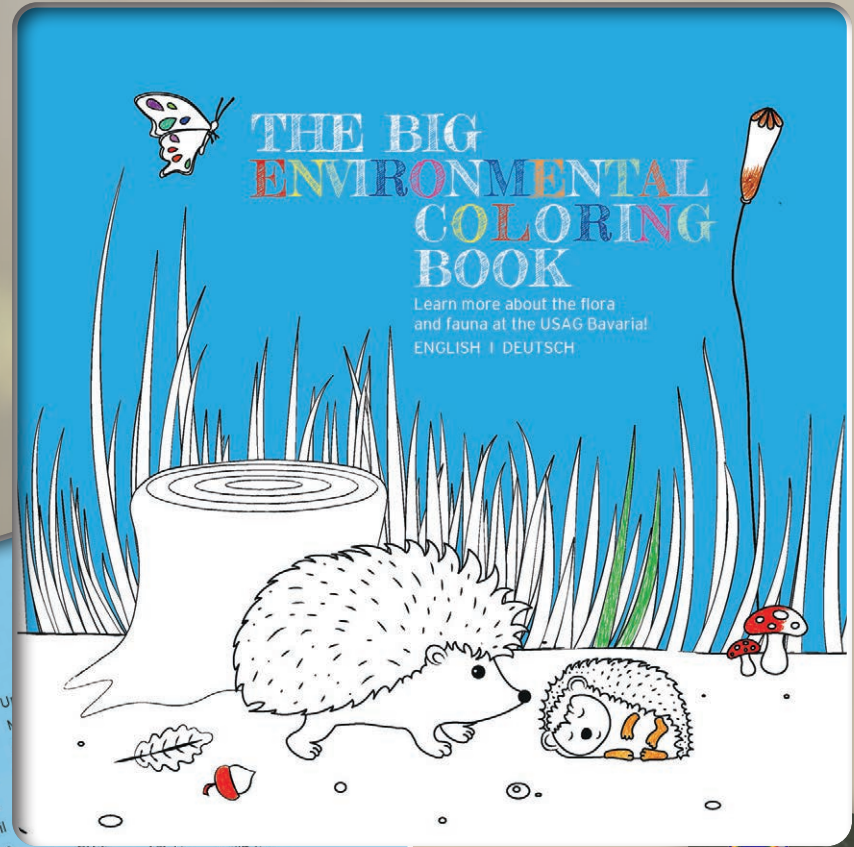
(International Society for Photogrammetry and Remote Sensing)



SUSTAINABLE RANGE AWARENESS



Sustainability is everyone's responsibility. The Sustainable Range Awareness (SRA) program performs outreach to the community (military and Host Nation neighbors) to promote the visibility of environmentally sensitive issues. SRA among unit commanders and ground troops helps to reduce avoidable environmental impacts on training lands by providing information on land use constraints.



Einleitung

Die US Armee in Europa ist ein Vorreiter im Bereich der ökologischen Nachhaltigkeit von Truppenübungsplätzen. Die Abteilung Integriertes Übungsplatzmanagement (Integrated Training Area Management, ITAM) ist ein wichtiger Bestandteil des Programmes zur umweltfreundlichen Nutzung von Schießbahnen (Sustainable Range Program, bzw. SRP). Dessen Aufgabe ist es, die Anforderungen des militärischen Übungsbetriebs mit einer umweltfreundlichen Nutzung des Übungsgeländes in Einklang zu bringen. Der Bereich Umweltbewusstsein auf militärischen Flächen (Sustainable Range Awareness) informiert umfassend über Umweltbelange und erhöht das öffentliche Interesse an

beschriebenen...
einiger bekannten...
diese schützen kann, und wie...
zielle Gefahren verringern kann.
Die Texte sind in deutscher und englischer Sprache abgefasst, um die Kontakte mit den deutschen Gemeinden vor Ort zu fördern.



Bat Basics

Microchiroptera

Not only is the bat the only mammal able to fly, the bat also has many other special characteristics. Bats are able to "see" in the dark using a special ability called echolocation. This means they make noises and listen for the echo, which tells them

how far away objects are depending upon how quickly the sounds bounce back. Bats sleep upside down during the day in places like caves, attics, cellars, and in holes in trees during the summer.

Fascinating

Fungi are a group of organisms, which, unlike plants, do not need sunlight to make energy for themselves. Fungi are everywhere in large numbers on land, in water, in the air, and even in plants and animals. Most fungi grow in huge networks in places you wouldn't see, like underground or in old food. You have probably seen mold on bread, or a mushroom in the forest - these are the small parts of fungi that are visible.





Military Training Areas Islands of Biodiversity

Military training areas provide special refuge for numerous plant and animal species, many of which have been in decline or have disappeared from the standard cultivated landscape. These islands of biodiversity have developed because they are characterized by large, uninhabited areas that are not subject to conventional use of fertilizers and pesticides. Military activities cause natural disturbances, resulting in various stages of vegetation succession and the formation of structured habitats. These habitats support an incredible biodiversity and are preserved due to the military use.

"...most of the military areas, and especially those used for training and testing, contain significant, even spectacular, amounts of natural and semi-natural habitats and landscapes, with corresponding abundances of wildlife... they are among the richest and most important sites for biodiversity in their country."

European Commission



Integrated Training Area Management
GUARDIANSHIP
REPORT 2018

© Photos courtesy of David Mark, Desirée Schwiers, Rudi Leitl, and others active in environmental protection at military training areas.

Areas of Biodiversity

...especially those used for training and testing, contain significant, even spectacular, amounts of natural and semi-natural habitats and landscapes, with corresponding abundances of wildlife...

Militärische Übungsplätze Inseln der Artenvielfalt

...die meisten der zu Übungs- und Testzwecken genutzten militärischen Übungsplätze bieten eine hohe, wenn nicht gar eine eindrucksvolle Anzahl natürlicher oder naturnaher Lebensräume und Landschaften mit entsprechender Vielfalt an Flora und Fauna... sie zählen zu den vielseitigsten und bedeutendsten Standorten zum Erhalt der Artenvielfalt in ihren Ländern."

EUROPÄISCHE KOMMISSION

Militärische Übungsplätze bieten besondere Schutzgebiete für zahlreiche Pflanzen- und Tierarten, von denen viele in den gleichförmig geprägten Kulturlandschaften abnehmen oder schon verschwunden sind. Diese Inseln der Artenvielfalt zeichnen sich durch große und von Verkehrswegen nicht durchschnittene unbewohnte Flächen aus, die zudem nicht durch konventionelle Dünger und Pestizide belastet sind. Militärische Übungen ahmen natürliche Störungen nach und fördern so die Entwicklung verschiedener Sukzessionsstadien und strukturreicher Lebensräume. Diese durch militärische Übungen erhaltenen Lebensräume beherbergen eine unglaubliche Artenvielfalt.



© Photos courtesy of Jürgen Pflfelderer (IVL)

WHO NEEDS WHAT



Soldier's Field Cards

Essential environmental guidelines on training area usage; vehicle movement; petroleum, oil and lubricants handling; and fire prevention. Field cards also include Medical Evacuation (MEDEVAC) procedures, radio frequencies, emergency numbers, and a training area map.



Installation Maps

Installation special maps display topographic data and military training features for selected USAREUR-AF training areas. Maps include aerial imagery, locator route maps, and Soldier's Field Cards information.



Map Atlases

Hard copy atlas which provides large scale topographic and aerial image maps of JMRC, to include all JMRC training facilities.



ARM Mobile App

Includes all USAREUR training areas, training area gate locations, Esso gas stations, and standard topographic or aerial image maps. It supports navigation to those hard to find training area gates – includes gate to gate routing!



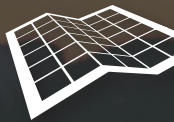
TAP IN

Similar to Google Maps®, search training support facility locations, view facility-specific information, download PDFs (i.e. SOPs, handbooks, access maps), and query real-time and future range facility management support system (RFMSS) scheduling data for all USAREUR-AF training facilities.



USAREUR-AF Environmental Officer Guide Mobile App

Includes valuable reference material targeting unit environmental officers and includes the 'You Spill, You Dig' brochure, garrison spill response plans, guidance documents, risk matrix, and material safety data sheets (MSDS).



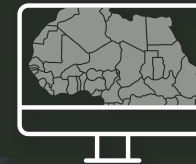
Soldier Field Card Mobile App

Application includes training area maps, safety information and standard guidelines for ensuring continued environmental stewardship.



Training Support Kiosk

Located at Grafenwöhr Range Operations and Training Support Center Hohenfels, TSAE Kiosks allow users to query and print maps, information on training resources (e.g. Deployable Instrumentation System – Europe, and the Training Aids Production Center).



ITAM Viewer

A five DVD set of geospatial data covering all USAREUR-AF training areas and ranges. Set includes training areas in Germany (incl. Bundeswehr), Italy, Romania, Bulgaria, and many other training sites throughout Europe and Africa.



10,000's

VIEWERS

U.S. Soldiers, Garrison and HQ Civilians, Training Support Civilians, Host Nation Agencies and select Foreign Military Personnel

1,000's

PLANNERS

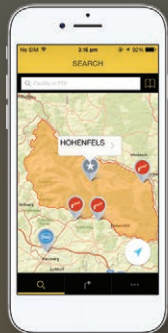
G3/S3, Master Gunners, Safety, Range and Training Area Managers, SRP Personnel, Garrison Planners, Environmental Officers and SMEs

Soldier's Field Cards

- » Training Area "Best Practices" Reference
- » MEDEVAC & Safety Information
- » Point of Contact (POC)



Android IOS



Army Range Mapper

- » Route Planner
- » 80+ USAREUR-AF Training Areas
- » Access Gate Locations
- » Esso Gas Stations (Germany)



Android IOS



USAREUR-AF Environmental Officer Guide

- » Authoritative Environmental Reference
- » Must-have for Environmental Officers
- » Fire and Spill Response, POCs
- » HAZMAT Management



Android IOS

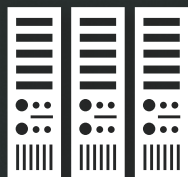
Raised Relief Maps

3D plastic-molded maps that depict contoured landscapes using high resolution digital terrain models. Available for: GTA, JMRC Hohenfels, Afghanistan provinces (Kabul, Kunar, Paktika), Europe, Africa, N. Africa, Middle East, and the Caucasus region.



Data Warehouse

Central, standardized, multi-user access repository of geospatial data developed and acquired by USAREUR-AF SRP over the last 20 years. Contains topographic maps, imagery and GIS layers formatted for use in USAREUR-AF SRP products and services.



License Server

USAREUR-AF SRP hosts the ArcGIS license server for IMCOM Europe Environmental departments.



ArcGIS Online Services

Web-based geospatial data services hosted by USAREUR-AF SRP, providing easy, secure access to GIS data for USAREUR-AF Training Areas for use in web-browser applications and desktop GIS software.

STEWARDSHIP
REPORT
2020

Annual Reports

Annual summaries of program and project achievements, milestones, events, customer support activities and lessons learned.



7th ATC Overview - Training Support Map

Summarizes valuable information on in-theater training capabilities, projects stationing and training support requirements over the next five years.



Studies

ITAM provides a wide range of training land studies and geospatial analyses ensuring decision makers have authoritative information.

100's

GIS ANALYSTS

Professional GIS Personnel at SRP, Garrison, Units and select Contractors

10's

COMMANDER / ORGANIZATION MANAGER

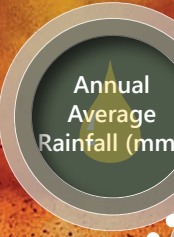
Commanders, Directors and Program Managers

TAP IN



The Tool for Training Planners

TAP IN is a "Google Maps®" style Common Access Card (CAC) enabled NIPR net web application that allows users to explore and discover training resources throughout EUCOM and AFRICOM and select CONUS locations.



Visit: <https://tapin.eur.army.mil/>
or search **7th ATC TAP IN**

3,987

Resource Library Documents:

- » Digital Soldier's Field Cards
- » Range Surface Danger Zones
- » Standard Operating Procedures
- » Training After Action Reviews
- » Host Nation Policies and Regulations
- » Unmanned Aerial Vehicle (UAV) Regulation

3,223

PDF maps

1,387

Live-fire ranges and maneuver areas in CONUS

- » Fort Bragg
- » Fort Campbell
- » Fort Carson
- » Fort Hood
- » Fort Riley
- » Fort Steward



Anti-Tank

Aviation
Fixed/Rotary

Small Arms

UAS Laser
Training

Tracked /
MGS /
Wheeled

Mortar

Information on capability

Artillery

Mean
Average
Temp

LZ & DZ
Survey

Open Area

SOPs

Scheduling

Mapping

1,107

Live-fire ranges and maneuver areas in
EUCOM / AFRICOM

386

Training Sites

BY THE NUMBERS



2020 TAP IN Statistics

4,846,062

TAP IN and SRP portal hits



31,872

TAP IN visits

6,372

SRP portal web visits

2020 Mobile App Download Statistics

1,505

Total downloads

237

Army Range Mapper Mobile



1,151

Soldier's Field Cards

117

Environmental Guide

2020 GIS Support Statistics



41,850

Maps Printed

157

Attended the SRP Workshop with 20 different nations represented

93,700

Field Cards Printed

100

Imagery / Elevation Datasets Acquired

385

GIS Data Requests

96

Technical GIS Requests

430

Custom Maps Authored

13

SOPs and BMPs written

ITAM SUPPORTED EXERCISES



Noble Partner (July 2020):

Noble Partner is an exercise cooperatively led by the Georgian Armed Forces and USAREUR-AF. The exercise is intended to support and enhance the readiness and interoperability of Georgia, participating nations, regional partners and the U.S. during a multinational training operation.



Combined Resolve XIV (September 2020):

Nearly 3,500 participants from eight Allied and Partner nations participated in Combined Resolve XIV at the U.S. Army's Grafenwöhr and Hohenfels training areas September 2-29, 2020. The exercise was designed to evaluate and assess the readiness of the 2nd Armored Brigade Combat Team, 3rd Infantry Division to fight and win. The exercise also focused on strengthening interoperability with multinational partners.

Participating nations included France, Italy, Lithuania, North Macedonia, Poland, Romania, Slovenia, Ukraine and the U.S.



Rapid Trident (September 2020):

The annual exercise, Rapid Trident (RT20), is a culminating event for Ukrainian troops and validates the development of the Yavoriv Combat Training Center at the International Peacekeeping and Security Center, which is under the mentorship of the Joint Multinational Training Group-Ukraine.

RT20 was been rescheduled to take place in September 2020, after it was modified in size, scope, scenario and timing due to the COVID-19 virus outbreak and the resulting precautionary measures.

SUMMER EXERCISE SERIES 2020

28,200

Total field cards produced for Defender Europe 20 Plus (DE 20 Plus)
(including 500 for various small areas)



28,882

Total maps printed for DE 20 Plus
(including 500 for various small areas)

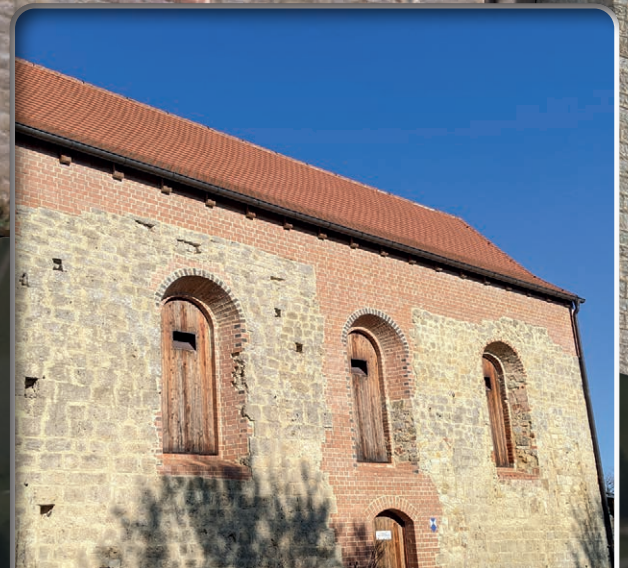


*Maps produced for each location

BERGHEIM CHURCH IN HOHENFELS

Bergheim Bat Sanctuary Apse

This project will rebuild the apse of the historic Bergheim Church providing additional bat roosting habitat for the Brown and Grey Long-eared Bats, as well as the Greater Horseshoe Bats. This project's success is due to the working relationship between the 7th ATC, USAG Bavaria, EU, German Federal Forestry Service, and local nature protection agencies. The bat populations in HTA have been able to survive and flourish due to the delicate balance that military training provides within the valleys and woodlines, which provide forage habitats. HTA has been absent of any agricultural activities for over 100 years and has a high level of biodiversity. Bat habitats such as Bergheim Church are examples of the U.S. Army Europe's dedication to outstanding environmental stewardship within one of our world class combat training centers.



ITAM with the aid of UAV technology was able to collect data of the Bergheim Church and render a 3D model using photogrammetric software.



3D visualization (view from south east)



Current view



Proposed view

3D visualization (view from north east)



Current view



Proposed view

FOREST STEWARDSHIP



Single-layer pine stand



Mixed multi-layer stand

Forest Transition for Sustainability in GTA

Since 2000 German Federal Forestry has developed the former single-layer pine stand forest of GTA into a more resilient, mixed stand forest.

There are multiple advantages to mixed stand forests in a military training environment. These forests function as best management practices to reduce noise and erosion, act as bullet traps, and provide fire protection, as well as to improve ecological systems.



Bundesanstalt für
Immobilienaufgaben



Bundesforst

ENVIRONMENTAL MANAGEMENT

Environmental Education, Awareness and Outreach Program

USAG Bavaria's environmental education, awareness and outreach program has adapted to better serve its community. Traditionally, the ED hosts or participates in a number of community events to improve the garrison's environmental performance, raise environmental awareness, and educate the USAG Bavaria community. 2020 has been a challenging year for many but the USAG Bavaria ED's Education, Awareness and Outreach program thrives.



Online Presence

When physical limitations were put in place, the ED pivoted to an online strategy to educate the community. The USAG Bavaria ED's Facebook page was used to reach and educate the USAG Bavaria community about pertinent environmental issues. Virtual activities and high-quality videos on topics such as native mammals, human and wildlife conflicts were produced and shared on the social media platform.

Virtual Hiking Program

The "Get Into Nature" hiking program, which encourages new hikers to get out and explore Bavaria, was restructured to include virtual hikes. When unable to lead monthly hikes in person, the ED provided recommendations and interactive navigation files for participants to use during self-guided hikes.

Outreach Events

School and community outreach events were adjusted so that community members could continue to experience hands-on and face-to-face learning about environmental topics and issues.

To learn more about the outreach program visit:

<https://home.army.mil/bavaria/index.php/environmental>

To follow the program or request support visit:

<https://www.facebook.com/USAGEnvironmental/>



2021 INITIATIVES



Erosion and Trail Repair in Italy

The Venzone Range, Italy, has one main access road entering from the highway which has critical deficiencies that must be urgently repaired before the next large precipitation event. This project refers specifically to the access road itself, where all vehicles (wheeled and tracked) enter the range and involves the installation of water bars to replace the existing deficient structures as well as the resurfacing and regrading of the entire road.

ITAM Support in Eastern European TA's

Encroaching vegetation removal in Latvian Training Area and improvements of tactical low-water crossings in Polish Training Area will be the first direct ITAM sustainment support projects in Eastern European TAs. These investments in LRAM and environmental sustainability are critical to the enduring U.S. Army mission within the Atlantic Resolve footprint.



DEFENDER Europe 21 exercise

USAREUR-AF conducts Defender Europe 21 in southeastern Europe and Estonia in order to demonstrate the United States Army's ability to rapidly deploy a large combat-credible force to the EUCOM of responsibility.



FY 2021 European Deterrence Initiative

The Fiscal Year (FY) 2021 European Deterrence Initiative (EDI) continues to provide support for rotational force deployments, infrastructure investments, and deliver the right capabilities in key locations throughout Europe (i.e., Air Force-European Contingency Air Operations Sets (ECAOS), Army Prepositioned Stocks (APS)).

EDI provides one of the primary funding sources for the EUCOM, and its Service Components, to continue the posture adjustments made in response to the European security environment.



NATO enhanced forward presence

As part of NATO's strengthened deterrence and defence posture, Allies agreed at the 2016 Summit in Warsaw to enhance NATO's military presence in the eastern part of the Alliance.

NATO's enhanced forward presence is defensive, proportionate, and in line with international commitments. It represents a significant commitment by Allies and is a tangible reminder that an attack on one is an attack on all.



Green lizard (*Lacerta viridis*)



For further information or copies of this Stewardship Report, please contact the ITAM office: +49 9641 70 569 0366 or e-mail: usarmy.bavaria.7atc.list.usareur-srp@mail.mil

Photos primarily provided by:
www.dvidshub.net
www.flickr.com/photos/7armyjmtc

Printed on Forest Stewardship Council® (FSC®) certified paper. FSC® products come from forests certified as being in compliance with the environmental and social standards of the Forest Stewardship Council.

<https://srp.usareur.army.mil>